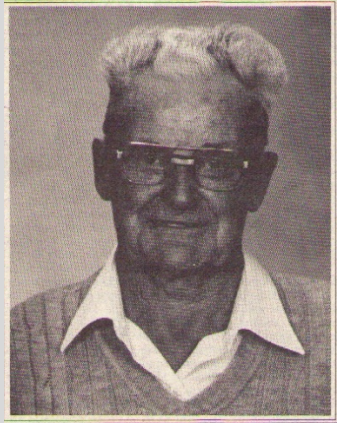


# HELEN & ORVAL COUCH



**STORY:** Orval Couch (1911 - 1993), started working on the Alaska Highway in Dawson Creek, BC in 1944. He then moved to Swift River, where Helen (nee Sippel) (1914 - 2008) and their children joined them in 1945. Helen was the first woman in Swift River camp, where there were few amenities like running water.

The Couches moved to Whitehorse in 1953, where Orval continued working on the highway until 1976.

The Couches were deeply involved in Yukon politics, church, and volunteer activities. They often boarded children attending school in Whitehorse.